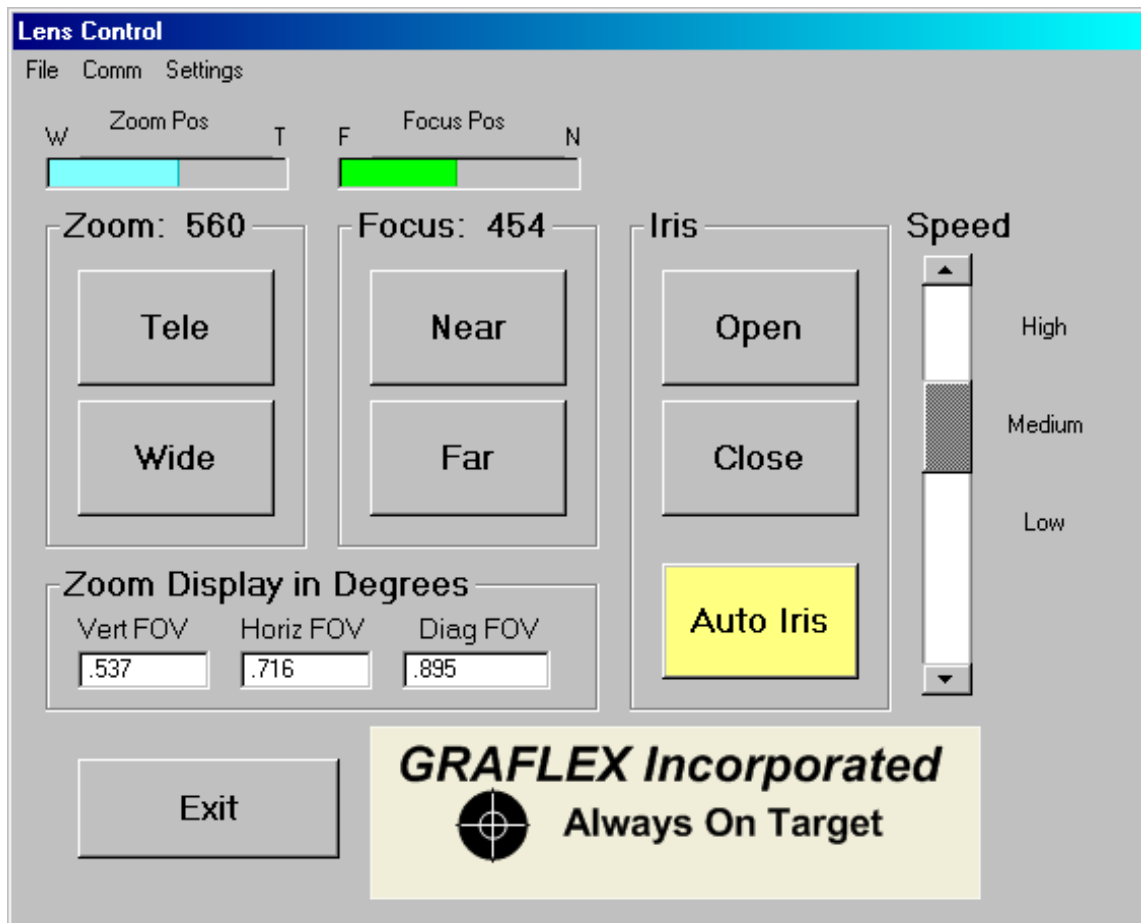


# Graflex DIS-II Digital Interface System

The *Graflex Incorporated* DIS-II Digital Interface System allows a user with minimal knowledge to transform most any standard zoom lens into a computer controlled device with a wide range of capabilities. The DIS-II comes complete with all hardware and an easy to operate GUI necessary to transform a standard analog zoom lens into a fully digital system operating from most any computer.



## GRAFLEX Incorporated



Always on Target

15855 Assembly Loop – Suite 100 - Jupiter, FL 33478 – USA

Telephone: (561)691-5959 Fax: (561)691-5983 E-mail: Sales@Graflex.com

# Graflex DIS-II Digital Interface Board

**Zoom Display Setup**

**Lens Focal Length Range (mm)**

Min Focal	Max Focal	Total Counts
<input type="text" value="45"/>	<input type="text" value="890"/>	<input type="text" value="637"/>

**Sensor Image Size**

Vertical (mm)	Horizontal (mm)
<input type="text" value="4.8"/>	<input type="text" value="6.4"/>

1" (9.6mm x 12.8mm)  
 2/3" (6.6mm x 8.8mm)  
 1/2" (4.8mm x 6.4mm)  
 1/3" (3.6mm x 4.8mm)  
 1/4" (2.7mm x 3.6mm)  
 Other (mm)  
Vertical  Horizontal

**Display**

Format

Degrees  
 mRad

Parameters

Vertical  
 Horizontal  
 Diagonal

## Features

- Zoom pot feedback in degrees or mrad displayed in real-time.
- Simple calibration based on focal length, zoom pot feedback, camera format.
- Easy to operate GUI.
- AI Bypass circuitry works on all lenses with motor driven iris.
- Speed Control for zoom & focus functions.