

Graflex Sensor Positioners – PT150

The Graflex Incorporated Sensor Positioners offer the reliability and features that allow you to rest easy at a price that gives our competition nightmares.



PT150 Highlights

- ***Mil 810 Tested***
- ***150 Pound Payload Capacity***
- ***Very High Resolution, Accuracy and Repeatability***
- ***RS Sensor Interface***
- ***Extremely Rugged Design***
- ***No Routine Maintenance Required***
- ***Exceptional Travel Velocity***
- ***Compact Design***
- ***GUI Controlled***

GRAFLEX Incorporated



Always on Target

15855 Assembly Loop – Suite 100 - Jupiter, FL 33478 – USA

Telephone: (561)691-5959 Fax: (561)691-5983 E-mail: Sales@Graflex.com

PT150 Technical Specifications

MECHANICAL

Dimensions	14.0" (w) x 15.0" (h) x 10.0" (d)
Weight	65 Lbs
Base Dim's	9.5" Diameter (18.0" w/Shock Mount)
Base Mounting	Contact Factory
Construction	Aluminum and Stainless Steel
Color	Anodized or Painted & Stainless Steel
Payload Capacity	150 Lbs - Balanced
Drive Motor	Brush DC Servo
Travel Range	360° Continuous @ Azimuth 5° thru 270° Fully Adjustable @ Elevation
Holding Brake	Mechanical w/Electrical Interlock
Tilt Limits:	Electrical, Mechanical, Software
Backlash	None

COMMUNICATION

Interface	RS-422 or RS-232
Motor Controller	Microprocessor based
Sensor Pass-Thru	16 Ea – 2 Amp, 8 Ea – 5 Amp, 3 Ea - Coax (Heater Line NOT Included Above)

ELECTRICAL

Voltage	24Vdc (Nominal)
Power	Contact Factory
Heater	Optional – Pre-wired Std

OPERATIONAL

Travel Velocity	60°/Sec.- .005°/Sec.
Resolution	.0002°
Repeatability	.002°
Accuracy	.0055°
Payload Inertia	6.3 ft-lb-sec ² (Az.), 3.7 ft-lb-sec ² (Elev.)
Feedback:	20 Bit On-Axis Encoder (Azimuth & Elevation)

OPTIONS

Dynapel Image Stabilization Unit
Payload Mounts
Heaters (Heater Blanket)
Shock Mount (Sorbothane Engineered)
High Capacity Slip Rings
Various Coating (Finish) Systems

ENVIRONMENTAL(MIL 810E)

Operating Temperature: 501.00 Procedure II (1 Cycle @ 3 Hours Each -31.7° C and 51.7° C)
Note: These Ranges Require Heater Blanket

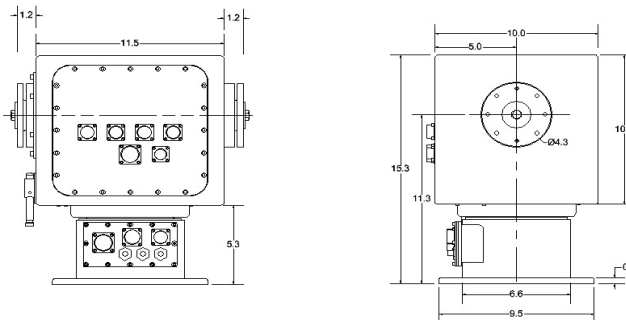
Humidity: 507.00 Procedure III (2 Cycles of 24 Hours @ 50° C and 100% Humidity)

Salt Fog: 509.00 Procedure I (1 Cycle of 24 Hours @ 5% Sodium Chloride)

Dust & Wind: 510.00 Procedure I (1 Cycle of 6 Hours)

Vibration (514.4):	<u>Axis</u>	<u>Frequency (Hz)</u>	<u>Amplitude</u>	30 Min/Axis
	All	2.7 to 5.5	1.0" DA	
		5.5 to 38	± 1.5g	
		38 to 50	.002" DA	
		50 to 200	± 2.5g	

Shock (516.4): 6± .6g's, 11.0 ± 1.1 ms half sine wave applied in each direction of 3 mutually perpendicular axis. 20 ± 2.0 g's, 11.0 ± 1.1 ms half sine wave applied in each direction of 3 mutually perpendicular axis with Optional Shock Mount.



Note: Specifications are Subject to Change w/o Notification