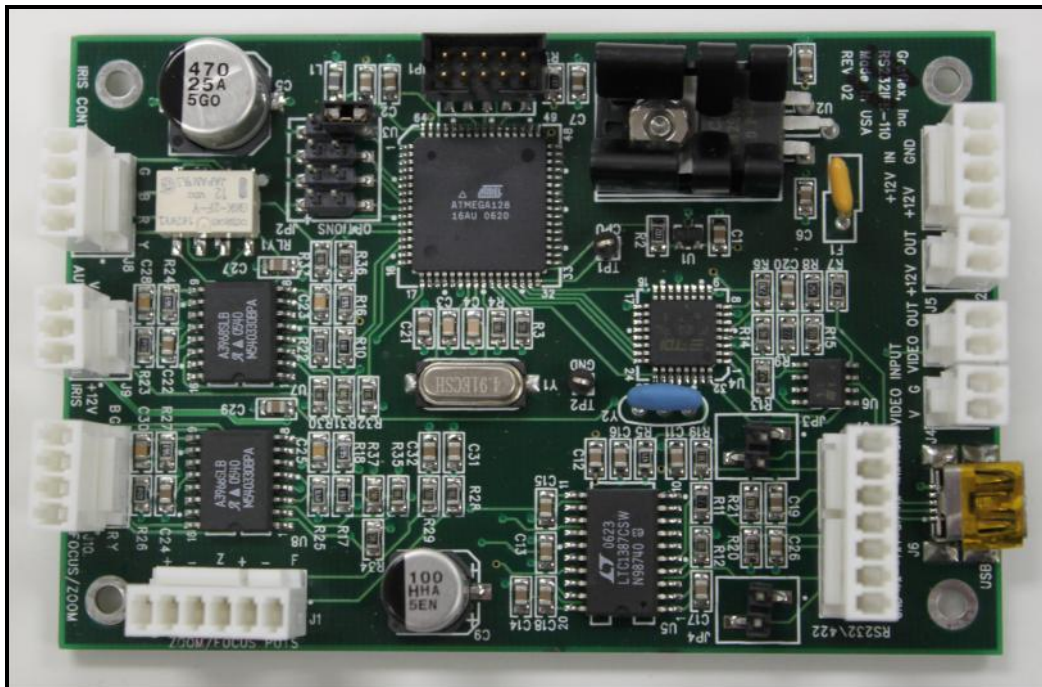
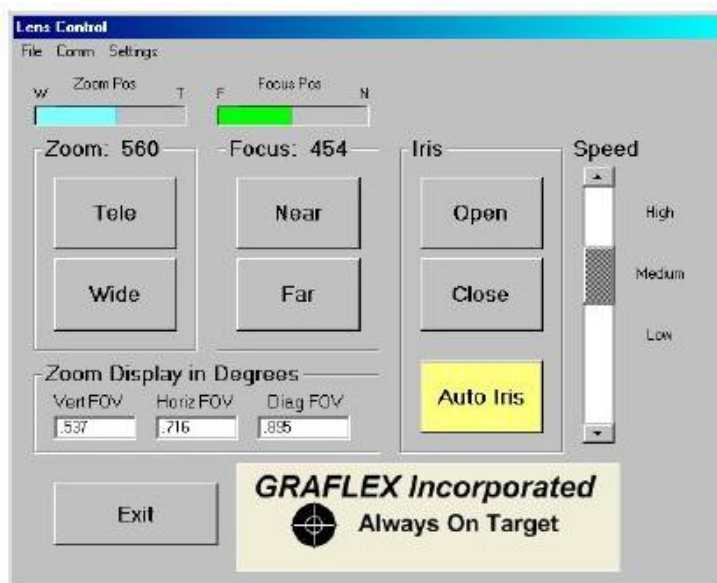


# Graflex DIS-II for Digital Control of Zoom Lenses

The **Graflex Incorporated** DIS-II Printed Circuit Board (PCB) is an option available only with the purchase of a Graflex zoom lens. The DIS-II provides full digital control of the lens via RS-232 or RS-422 protocols. The DIS-II can also be directly connected to a computer via a USB cable. The DIS-II is delivered complete with lens integration, and tested prior to shipment.



The DIS-II provides full digital control of Zoom, Focus, and Iris functions. When the DIS-II option is purchased, Graflex will also install a relay in the Iris control circuit for selection of auto or manual iris. The relay is controlled through the DIS-II PCB. A GUI is provided for on-screen graphical control, as shown below.



## DIS-II GUI FEATURES

- Graphical indication of Zoom/Focus position
- Adjustable speed for Zoom/Focus control
- Auto / Manual Iris Control
- Direct readout of FOV in degrees based on input lens parameters
- Microsoft Windows® compatible

**GRAFLEX Incorporated**



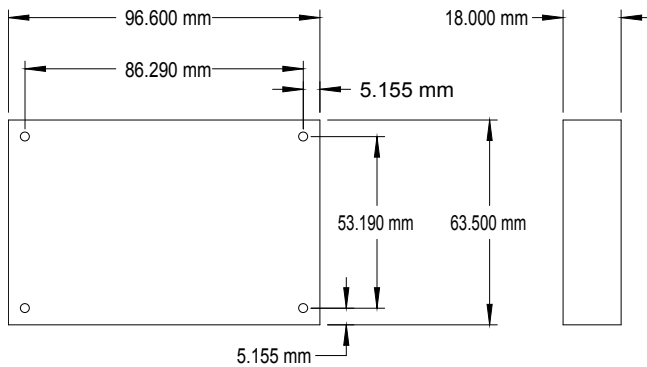
**Always on Target**

**15855 Assembly Loop – Suite 100 - Jupiter, FL 33478 – USA**

**Telephone: (561)691-5959 Fax: (561)691-5983 E-mail: Sales@Graflex.com**

# Graflex DIS-II for Digital Control of Zoom Lenses

## MECHANICAL DRAWING



## Functions / Specifications:

- Zoom, Focus, and Iris Motor Drive.
  - Zoom, Focus, and Iris Motor Speed.
  - Zoom & Focus Pot Position Feedback.
  - AI (Auto Iris) Bypass – Switches Iris function to Manual Mode.
  - Voltage Input: 12.0 Vdc
  - Current Draw: 300 mA (Max)
  - Connectors: Mating connectors & contacts are supplied with PCB. Replacement contacts are Molex .100" Pitch KK Crimp Series.
  - Note: PCB standard with USB but working distance limited to 5 Meters.
- Control: Via the Graflex DIS-II GUI or control program developed by customer.
  - Dimensions: 96.60mm x 63.50mm x 18.0mm (2.8mm Dia. Mounting Holes)
  - Weight: 41 Grams

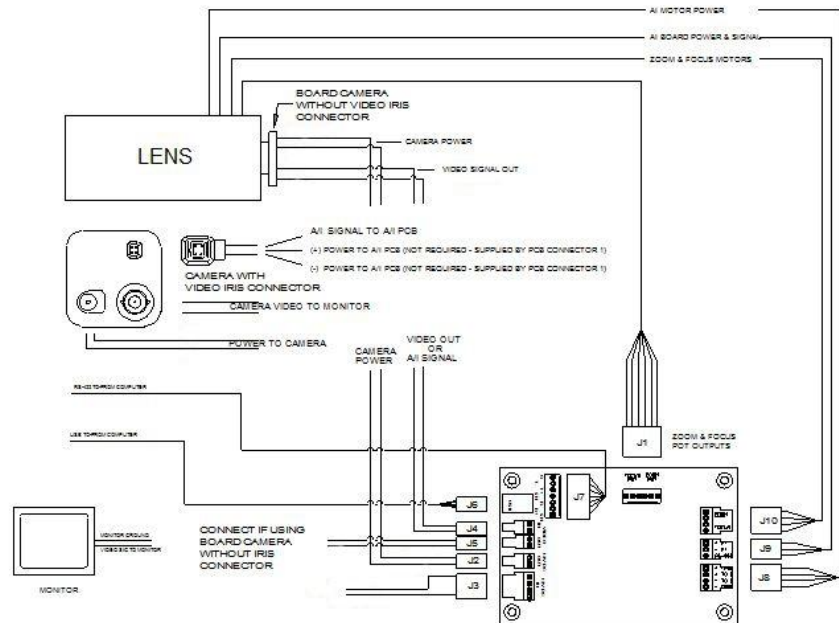
## APPLICATION NOTES:

The Graflex DIS-II PCB is designed to digitize the Graflex motorized zoom lenses. A Graphical User Interface (GUI) is available for Windows users. Otherwise, the user must design their own control program using the protocol commands provided in this manual. The user can switch from RS232 to RS422 via a jumper on the PCB. The board requires power of +12Vdc @ 300 mA (max). RS422 must be used should the distance between the PCB and the controlling computer exceed 15 meters. Additionally, the USB port can be used at up to 5 meters distance, and when configured as RS-232, up to 15 meters.

Graflex provides this accessory with a lens specifically modified for connection to the PCB. The connectors on the PCB are numbered J1 through J10. Four connectors (J1, J8, J9 and J10) connect from the LENS to the PCB. The Camera requires two connections to the PCB for Power (J2) and A/I (auto iris) Signal (J4). If the camera does not have an auto iris connection, connect the camera power to J5.

The DIS-II PCB is connected to a PC by either a serial port (J7), or a USB port with a serial adapter (J7), or a USB cable to a Mini-B USB connector (J6). The user can switch from RS232 to RS422 via a jumper on the PCB. The board requires +12Vdc @ 300 mA (max) connected at J3.

## CONNECTION DIAGRAM



**GRAFLEX Incorporated**

[WWW.GRAFLEX.COM](http://WWW.GRAFLEX.COM)

**Note: Specifications subject to change without notice.**